

RALLY

<i>ADVICE AND PRESSURE</i>	10
<i>BIMPAIR</i>	11

ASPHALT & SNOW RALLY

<i>MICHELIN PILOT SPORT A SS01, S10, M20, H30</i>	16
<i>MICHELIN PILOT SPORT A MW1</i>	18
<i>MICHELIN PILOT SPORT R</i>	20
<i>MICHELIN PILOT SPORT FW3</i>	21
<i>MICHELIN PILOT ALPIN NAO1</i>	22
<i>RECUTTING</i>	24

GRAVEL RALLY

<i>MICHELIN LATITUDE CROSS</i>	28
<i>MICHELIN LTX FORCE T</i>	29
<i>MICHELIN LATITUDE CROSS PZ</i>	30
<i>RECUTTING</i>	32

ICE RALLY

<i>MICHELIN XICE NORTH NAO1 & NAO1 CL</i> ..	35
--	----

<i>MICHELIN TRACK CONNECT MODE MOTORSPORT</i>	37
<i>TECHNICAL DATA</i>	38
<i>RECOMMANDATIONS</i>	40



ADVICE AND PRESSURE

Data for information purposes only, which may vary according to the actual conditions of use. In the event of use outside normal conditions of use, these recommendations must be adapted. Consult a professional.

We differentiate between cold and hot pressure. Cold pressure varies in accordance with the air/ground temperature and the length of the special stages. The hot pressure corresponds to the value measured at the end of the special stage.



We recommend a **COLD PRESSURE**, i.e. on departing the "pit", of **1.8 bar**. Just before starting the special stage, the pressure must be retaken as indicated below:

N5 CATEGORY

	☀ Stages			☁
	Stages < 10°	Stages > 15° & < 30°	Stages > 30°	
Asphalt	1.8 b	1.7 b	1.6 b	2.0 b
Gravel	2.0 b	1.8 b	1.7 b	2.1 b
Snow	1.8 b	1.7 b		
Ice	1.8 b	1.7 b		

b: bar

N3 & N2 CATEGORIES

	☀ Stages								☁
	Stages < 10°		Stages > 15° & < 30°		Stages > 30°				
	Front	Rear	Front	Rear	Front	Rear	Front	Rear	
Asphalt	1.8 b	2.0 b	1.7 b	1.8 b	1.6 b	1.7 b	2.0 b	2.1 b	
Gravel	1.9 b	2.0 b	1.8 b	1.9 b	1.7 b	1.8 b	2.0 b	2.1 b	
Snow	1.8 b	1.9 b	1.7 b	1.8 b					
Ice	1.8 b	1.9 b	1.7 b	1.8 b					

b: bar



The aim is to have a **HOT PRESSURE** between

	☀	☁
Asphalt	2.0 b to 2.3 b	2.1 b to 2.3 b
Gravel	2.2 b to 2.5 b	2.1 b to 2.3 b
Snow	1.9 b to 2.2 b	
Ice	1.9 b to 2.2 b	

b : bar



SET UP ADVICE

It is important to measure the pressure at the end of the special stage in order to know the hot value that corresponds to the operating pressure.

If the operating pressure is:

- below the operating range: no grip felt.
- above the operating range: appearance of vehicle mobility and deterioration of wear features.

If the pressure at the end of the special stage is too high, it is recommended this is adjusted and a maximum of 200 grams removed. In the wet, there should be no hesitation in raising these pressures back up, as the tyre gains no or little in temperature, and what's more, this is more efficient in evacuating water. The longitudinal lines allow for water evacuation and preventing aquaplaning, while the "unblockers" improve grip in the event of pollution.



BIMPAIR

RIDE DON'T STOP



88G CO2 REFILLABLE CARTRIDGE

THE HIGHEST CO2 CAPACITY ON THE MARKET!



INFLATE FUNCTION



REFILLABLE THROUGH MICHELIN MOTORSPORT'S DEALERS



EXCHANGE A FULL CARTRIDGE FOR AN EMPTY ONE



RESULTS

Refill a standard car tyre completely, or adjust the pressure on all 4 tyres (300g per tyre)

For example:
1.490 bars for 1 205x55x16 tyre
or 0.372 bars for each 1 of 4 tyres



ASPHALT & SNOW RALLY

Ø18"

PERFORMANCES

MICHELIN PILOT SPORT A	SS01	★★★★☆	★★★★☆	★★★★☆	★★★★☆	★★★★★	★★★★★
	S10						
	M20	★★★★★	★★★★☆	★★★★☆	★★★★☆	★★★★★	★★★★★
	H30						
MICHELIN PILOT SPORT A	MW1	★★★★☆	★★★★★	★★★★☆	★★★★☆	★★★★★	★★★★★
MICHELIN PILOT SPORT	FW3	★★★★☆	★★★★★	★★★★☆	★★★★☆	★★★★☆	★★★★☆
MICHELIN PILOT ALPIN	NA01	★★★★☆	★★★★☆	★★★★★	★★★★☆	★★★★☆	★★★★☆
	NA01 CL	☆☆☆☆☆	★★★★☆	★★★★★	★★★★★	★★★★☆	★★★★☆

DRY GRIP ROAD
 WET GRIP ROAD
 SNOWY GRIP ROAD
 ICY GRIP ROAD
 WARM UP
 HANDLING

		COMPOUND	SURFACE			CONDITION					TEMPERATURE (°C)										
			SMOOTH	LOW ABRASIVE	VERY ABRASIVE							-5	0	5	10	15	20	25	30	35+	
MICHELIN PILOT SPORT A	SS01	SUPER SOFT	Blue	Blue	Blue	Blue	Blue	Blue	Blue	Blue	Blue	Blue	Blue	Blue	Blue	Blue	Blue	Blue	Blue	Blue	
	S10	SOFT	Blue	Blue	Blue	Blue	Blue	Blue	Blue	Blue	Blue	Blue	Blue	Blue	Blue	Blue	Blue	Blue	Blue	Blue	Blue
	M20	MEDIUM	Blue	Blue	Blue	Blue	Blue	Blue	Blue	Blue	Blue	Blue	Blue	Blue	Blue	Blue	Blue	Blue	Blue	Blue	Blue
	H30	HARD	Blue	Blue	Blue	Blue	Blue	Blue	Blue	Blue	Blue	Blue	Blue	Blue	Blue	Blue	Blue	Blue	Blue	Blue	Blue
MICHELIN PILOT SPORT A	MW1	RAIN	Blue	Blue	Blue	Blue	Blue	Blue	Blue	Blue	Blue	Blue	Blue	Blue	Blue	Blue	Blue	Blue	Blue	Blue	Blue
MICHELIN PILOT SPORT	FW3	RAIN	Blue	Blue	Blue	Blue	Blue	Blue	Blue	Blue	Blue	Blue	Blue	Blue	Blue	Blue	Blue	Blue	Blue	Blue	Blue
MICHELIN PILOT ALPIN	NA01	SNOW	Blue	Blue	Blue	Blue	Blue	Blue	Blue	Blue	Blue	Blue	Blue	Blue	Blue	Blue	Blue	Blue	Blue	Blue	Blue
	NA01 CL	STUDED SNOW	Blue	Blue	Blue	Blue	Blue	Blue	Blue	Blue	Blue	Blue	Blue	Blue	Blue	Blue	Blue	Blue	Blue	Blue	Blue

GLAZE
 SNOW
 FROST
 WET CONDITION
 DAMP CONDITION
 DRY CONDITION



ASPHALT & SNOW RALLY

Ø14" (1), 15" (2), 16" AND 17"

		PERFORMANCES					
MICHELIN PILOT SPORT R	PO1	★★★★☆	★★★★☆	★★★★☆	★★★★☆	★★★★☆	★★★★☆
	11						
	21	★★★★☆	★★★★☆	★★★★☆	★★★★☆	★★★★☆	★★★★☆
	31						
MICHELIN PILOT SPORT A	MW1	★★★★☆	★★★★☆	★★★★☆	★★★☆☆	★★★★☆	★★★★☆
MICHELIN PILOT ALPIN	NA01	★★★★☆	★★★★☆	★★★★☆	★★★★☆	★★★★☆	★★★★☆
	NA01 CL	★★★☆☆	★★★★☆	★★★★☆	★★★★☆	★★★★☆	★★★★☆



		COMPOUND	SURFACE			CONDITION					TEMPERATURE (°C)										
			SMOOTH	LOW ABRASIVE	VERY ABRASIVE							-5	0	5	10	15	20	25	30	35+	
MICHELIN PILOT SPORT R	PO1	RAIN	Blue	Blue	Blue	Yellow	Yellow	Yellow	Blue	Blue	Yellow	Yellow	Yellow	Yellow	Blue	Blue	Blue	Blue	Blue	Blue	
	11	SUPER SOFT	Blue	Blue	Blue	Yellow	Yellow	Yellow	Blue	Blue	Yellow	Yellow	Yellow	Yellow	Blue	Blue	Blue	Blue	Blue	Blue	Blue
	21	SOFT	Blue	Blue	Blue	Yellow	Yellow	Yellow	Blue	Blue	Yellow	Yellow	Yellow	Yellow	Blue	Blue	Blue	Blue	Blue	Blue	Blue
	31	MEDIUM	Blue	Blue	Blue	Yellow	Yellow	Yellow	Blue	Blue	Yellow	Yellow	Yellow	Yellow	Blue	Blue	Blue	Blue	Blue	Blue	Blue
MICHELIN PILOT SPORT A	MW1	RAIN	Blue	Blue	Blue	Yellow	Yellow	Yellow	Blue	Blue	Yellow	Yellow	Yellow	Blue	Blue	Blue	Blue	Blue	Blue	Blue	
MICHELIN PILOT ALPIN	NA01	SNOW	Blue	Blue	Blue	Blue	Blue	Blue	Yellow	Yellow	Yellow	Yellow	Yellow	Blue	Blue	Blue	Blue	Blue	Blue	Blue	
	NA01 CL	STUDDED SNOW	Blue	Blue	Blue	Blue	Blue	Blue	Yellow	Yellow	Yellow	Yellow	Yellow	Blue	Blue	Blue	Blue	Blue	Blue	Blue	



(1) not available in MICHELIN Pilot Sport A MW1 and MICHELIN Pilot Alpine NA01 and NA01 CL
 (2) not available in MICHELIN Pilot Sport A MW1



MICHELIN PILOT SPORT A SS01, S10, M20, H30



WEATHER



SAVE UP TO 0.7 SECONDS PER KILOMETER ⁽¹⁾



ALMOST INSTANT WARM-UP

The tread is made of a new type of rubber to reach the correct operating temperature more quickly.



PRECISE AND IMMEDIATE FEEDBACK

Thanks to a reinforced carcass, the tyre provides better lateral and braking support compared to the MICHELIN Pilot Sport R. It therefore reacts quickly to driver inputs.



INCREASED LONGEVITY

Up to 30% ⁽²⁾ longer life compared to the equivalent compound in the previous MICHELIN Pilot Sport R range, thanks to a new rubber compound and tread pattern that spreads the effects of mechanical stress evenly over the entire tread surface..



Grip LONGITUDINAL GRIP

The innovative tread pattern provides traction on polluted roads and improves braking performance.

Available in 18"

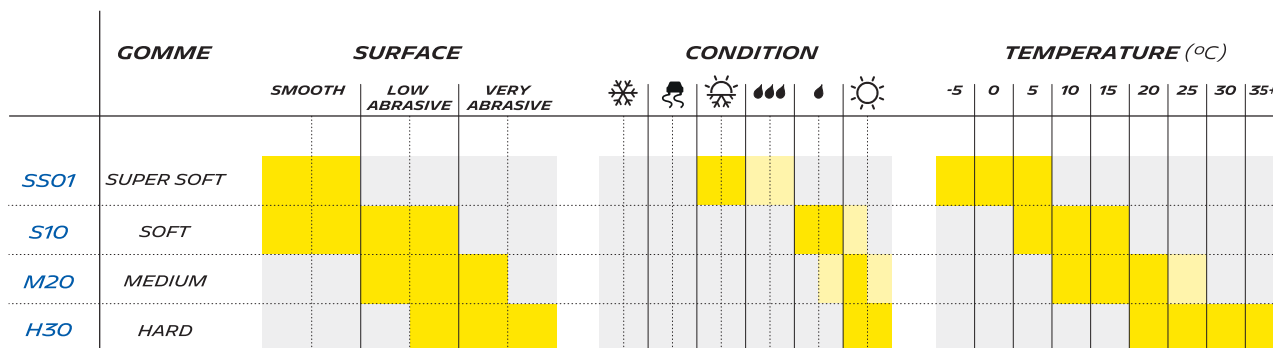
Road approved

TRACK CONNECT
cf. page 37

(1) 0.73 s/km faster with the MICHELIN Pilot Sport A S10 compared with the MICHELIN Pilot Sport R 11 in wet/dry conditions. Internal studies carried out in February 2020 in France on Skoda R5 and November 2019 in Spain on Citroen R5.

(2) Internal study carried out in May 2020 in France on Skoda R5.

DIAMETRE	SIZE	TL	RANGE	COMPOUND
18 "	20/65 - 18	TL	PILOT SPORT A	SS01
	20/65 - 18	TL	PILOT SPORT A	S10
	20/65 - 18	TL	PILOT SPORT A	M20
	20/65 - 18	TL	PILOT SPORT A	H30



GLAZE



SNOW



FROST



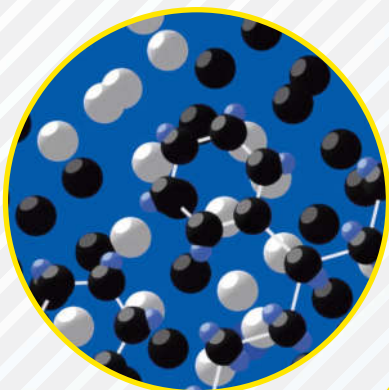
WET CONDITIONS



DAMP CONDITIONS



DRY CONDITIONS



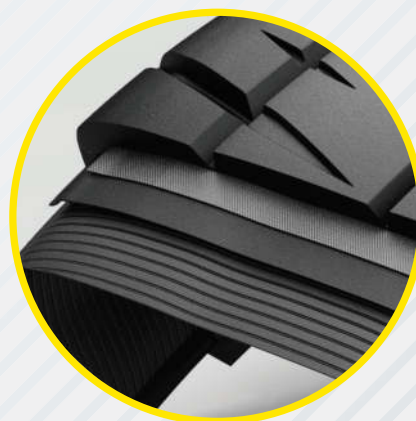
NEW ELASTOMER

This new synthetic rubber is designed to give warm-up and grip.



INNOVATIVE SCULPTURE

Transverse grooves on the inside and outside of the tread provide grip on slippery surfaces.



NEW ARCHITECTURE

A new layout of the plies on top of the tyre provides greater rigidity, thus optimising driving precision.



MICHELIN PILOT SPORT A MW1



WHEATER



THE GRIP FOR WET AND DRYING ROADS



GRIP FOR WET AND DRYING

Specially designed for driving on rainy and dry roads. The MICHELIN Pilot Sport A MW1 has a notch rate(1) that is twice as high as the MICHELIN Pilot Sport R P01, giving it excellent water evacuation. The transverse notches also allow it to find traction in the event of a change in grip (polluted roads, mud, gravel, etc.).



WARM UP

The MICHELIN Pilot Sport A MW1's «lightning-fast» tread pattern, which heats up the rubber and the carcass, ensures that the MICHELIN Pilot Sport A MW1 can be brought up to speed quickly.



PRECISE AND IMMEDIATE FEEDBACK

Thanks to its reinforced carcass, the MICHELIN Pilot Sport A MW1 guarantees very good lateral and braking support. The tyre reacts quickly to driving instructions.

TRACK CONNECT

cf. page 37

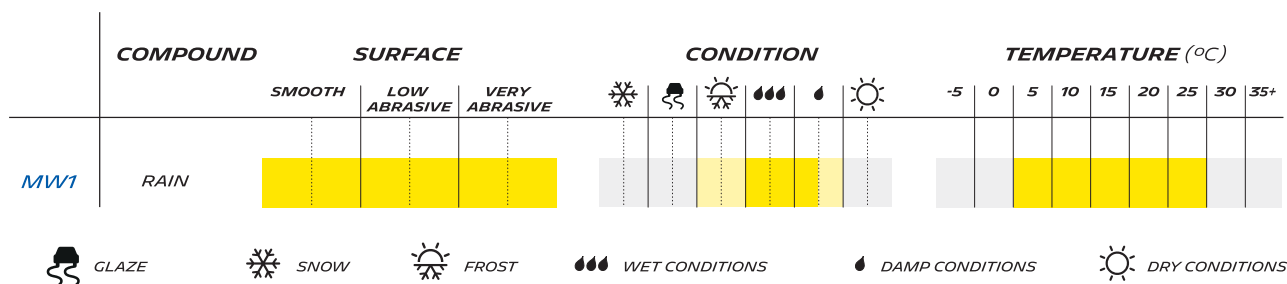
Available in 16", 17" and 18"

Road approved

(1) Volume notching rate

DIAMETRE	SIZE	TL	RANGE	COMPOUND	
16 "	19/60 - 16	TL	PILOT SPORT A	MW1	N
17 "	19/63 - 17	TL	PILOT SPORT A	MW1	N
18 "	20/65 - 18	TL	PILOT SPORT A	MW1	

N = NEW



HOW TO EVALUATE THE WEAR OF A TYRE?

MICHELIN PILOT SPORT A SS01, S10, M20, H30

MICHELIN SPORT A MW1

KNOWING THE WEAR % OF MY TYRE:



- **If 1, 2 and 3 are visible:**
wear is estimated < 25%.
- **If 2 and 3 are visible:**
wear is estimated between 25% and 50%.
- **If 3 is visible:**
wear is estimated between 50% and 75%.
- **If none are visible :**
wear is estimated between 75% and 100%.

MICHELIN PILOT SPORT R



WHEATER



MULTIPLE NATIONAL AND REGIONAL RALLY CHAMPION

Grip *GRIP*

Comprising two longitudinal lines in an dissymmetrical V shape, the MICHELIN Pilot Sport R guarantees excellent support when cornering and maximizes grip on dry ground. The groove width allows for significant water evacuation in the wet.



CONSISTENT PERFORMANCE

Its architecture has been developed specifically to guarantee consistent performance regardless of how long the specials last.

TRACK CONNECT

cf. page 37

Available in 14", 15", 16", 17" and 18"

Road approved except sized with *

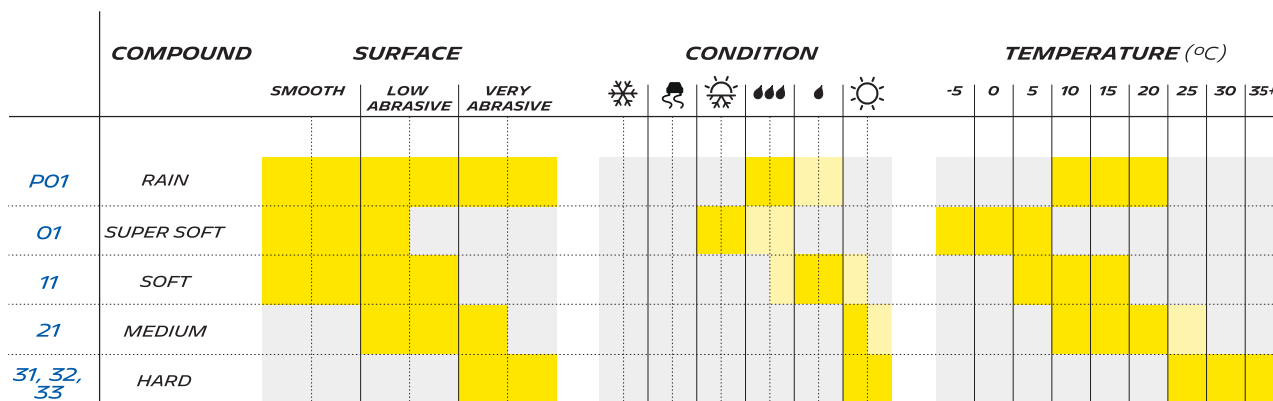


Cf. p25

DIAMETRE	SIZE	TL	RANGE	COMPOUND
14 "	16/57 - 14	TL	PILOT SPORT R	P01 *
	16/57 - 14	TL	PILOT SPORT R	11 *
	16/57 - 14	TL	PILOT SPORT R	21 *
	19/58 - 15	TL	PILOT SPORT R	P01 *
	19/58 - 15	TL	PILOT SPORT R	11 *
15 "	19/58 - 15	TL	PILOT SPORT R	21
	19/58 - 15	TL	PILOT SPORT R	31 *
	20/58 - 15	TL	PILOT SPORT R	P01 *
	20/58 - 15	TL	PILOT SPORT R	11 *
	20/58 - 15	TL	PILOT SPORT R	21 *
16 "	19/60 - 16	TL	PILOT SPORT R	P01 *
	19/60 - 16	TL	PILOT SPORT R	11 *
	19/60 - 16	TL	PILOT SPORT R	21
	19/60 - 16	TL	PILOT SPORT R	31 *

DIAMETRE	SIZE	TL	RANGE	COMPOUND
17 "	19/63 - 17	TL	PILOT SPORT R	P01 *
	19/63 - 17	TL	PILOT SPORT R	11
	19/63 - 17	TL	PILOT SPORT R	21
	19/63 - 17	TL	PILOT SPORT R	31 *
	20/63 - 17	TL	PILOT SPORT R	11 *
18 "	20/63 - 17	TL	PILOT SPORT R	21
	20/65 - 18	TL	PILOT SPORT R	P01 *
	20/65 - 18	TL	PILOT SPORT R	01 *
	20/65 - 18	TL	PILOT SPORT R	11 *
	20/65 - 18	TL	PILOT SPORT R	21
	20/65 - 18	TL	PILOT SPORT R	32 *
	20/65 - 18	TL	PILOT SPORT R	33

* Not road approved



MICHELIN PILOT SPORT R

ASPHALT & SNOW RALLY

TRACK CONNECT
 Cf. page 37

Available in 18"

Not road approved


WHEATER

THE MICHELIN RALLY TYRE FOR GT

Grip

Thanks to a tread stemming from asphalt WRC, comprising two longitudinal lines in a dissymmetrical V shape, the grip is constant, no matter the changes in traction. The tyre also guarantees excellent support when cornering.


CONSISTENT PERFORMANCE

Its architecture, developed specifically for adaptation to GT vehicles, guarantees constant performance over the various special types.

DIAMETRE	SIZE	TL	RANGE	COMPOUND
18"	24/65 - 18	TL	PILOT SPORT R	P01
	24/65 - 18	TL	PILOT SPORT R	11
	24/65 - 18	TL	PILOT SPORT R	21
	29/65 - 18	TL	PILOT SPORT R	P01
	29/65 - 18	TL	PILOT SPORT R	21
	29/65 - 18	TL	PILOT SPORT R	31

MICHELIN PILOT SPORT FW3


WHEATER

DESIGNED FOR RALLY ON HIGH WATER LEVELS

SIGNIFICANT WATER EVACUATION

Developed for driving on roads with high water levels, it has an excellent water evacuation capacity thanks to its narrow cut and longitudinal tread.

DIAMETRE	SIZE	TL	RANGE	COMPOUND
18"	18/65 - 18	TL	PILOT SPORT	FW3 L
	18/65 - 18	TL	PILOT SPORT	FW3 R

 L : Left
 R : Right

Available in 18"

Not road approved

MICHELIN PILOT ALPIN NA01 & NA01 CL



WHEATER

MULTIPLE WINNER OF THE MONTE CARLO RALLY



GRIP ON WET AND SNOWY ROADS

Guarantees optimum grip on wet, snowy and icy roads thanks to an architecture optimizing the area in contact with the ground.



STUDED VERSION

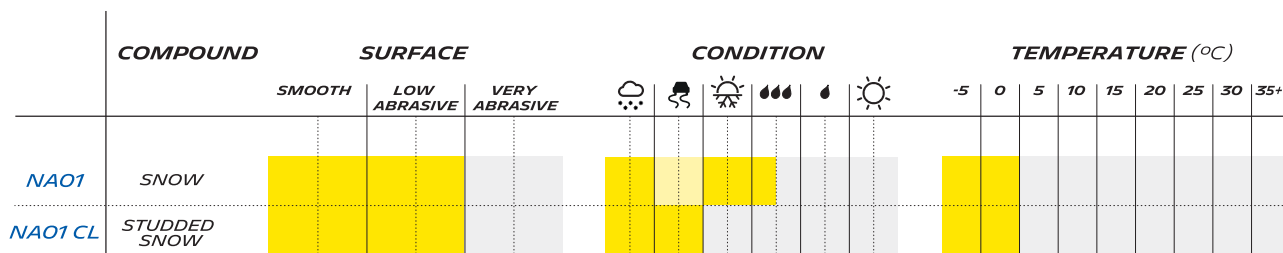
The studded version meets the "Monte Carlo" rally regulations, allowing for use in mixed icy/snowy conditions.

DIAMETRE	SIZE	TL	RANGE	COMPOUND
15"	16/61 - 15	TL	PILOT ALPIN	NA01 CL
	16/61 - 15	TL	PILOT ALPIN	NA01
16"	16/61 - 16	TL	PILOT ALPIN	NA01 CL
	16/61 - 16	TL	PILOT ALPIN	NA01
17"	16/61 - 17	TL	PILOT ALPIN	NA01 CL
	16/61 - 17	TL	PILOT ALPIN	NA01
18"	18/65 - 18	TL	PILOT ALPIN	NA01 CL
	18/65 - 18	TL	PILOT ALPIN	NA01

CL : studded

Available in 15", 16", 17" and 18"

Not studded & studded type Monte Carlo



GLAZE



SNOW



FROST



WET CONDITIONS



DAMP CONDITIONS



DRY CONDITIONS



RECUTTING



Recutting modifies the tyre characteristics and performances. This operation requires suitable equipment and tools and compliance with the instructions.

Before starting to recut the desired tyre, we recommend you carry out a few tests on a used tire in order to correctly assess the depth and width of the grooves. This will prevent damaging the casing plies located under the rubber.



Recutting a tyre that has already been used (not new), is prohibited. Recutting or regrooving ECE R30 homologated tyres, thus intended for use on public roads, is prohibited.



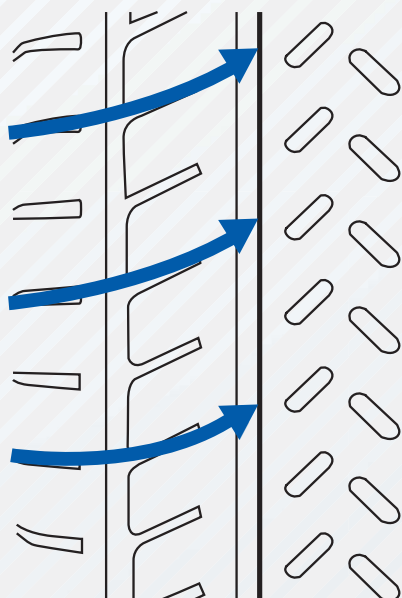
Contact **Michelin** services prior to any recutting operation : **00 33 (0) 4 73 30 14 55**.

RECUTTING PLAN FOR A MICHELIN PILOT SPORT R TYRE

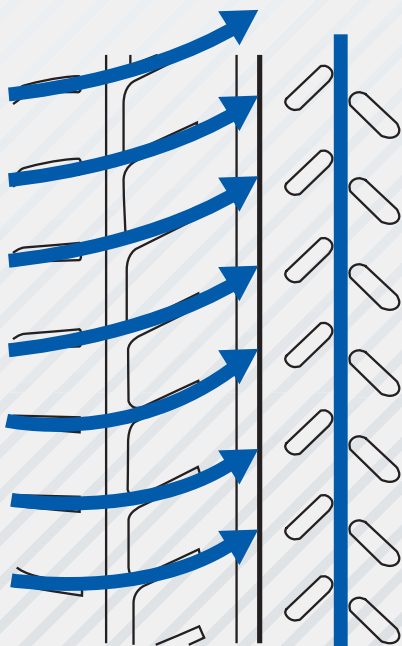
There are two recutting solutions, depending on the water height.



"WET" USE



"FULL WET" USE



GRAVEL RALLY

		PERFORMANCES				
		GRIP ABRASIVE SURFACE	GRIP ROLLING SURFACE	ROBUSTNESS	DRIVE	PRECISION
MICHELIN LATITUDE CROSS	S70					
	M80	★★★★★	★★★★☆	★★★★★	★★★★★	★★★★☆
	M85					
	H90					
MICHELIN LTX FORCE T	71					
	81	★★★★☆	★★★★★	★★★★☆	★★★★★	★★★★★
	91					
MICHELIN LATITUDE CROSS PZ	70	★★★★☆	★★★★☆	★★★★☆	★★★★☆	★★★★☆
	80					

		COMPOUND	SURFACE			CONDITION			TEMPERATURE (°C)								
			GRAVEL	COMPACT	ABRASIVE	MUD	MIXED	DRY	-5	0	5	10	15	20	25	30	35+
MICHELIN LATITUDE CROSS	S70	SOFT	Blue	Blue	Blue	Blue	Blue	Blue	Blue	Blue	Blue	Blue	Blue	Blue	Blue	Blue	Blue
	M80	MEDIUM	Blue	Blue	Blue	Blue	Blue	Blue	Blue	Blue	Blue	Blue	Blue	Blue	Blue	Blue	Blue
	M85	MEDIUM/HARD	Blue	Blue	Blue	Blue	Blue	Blue	Blue	Blue	Blue	Blue	Blue	Blue	Blue	Blue	Blue
	H90	HARD	Blue	Blue	Blue	Blue	Blue	Blue	Blue	Blue	Blue	Blue	Blue	Blue	Blue	Blue	Blue
MICHELIN LTX FORCE T	71	SOFT	Blue	Blue	Blue	Blue	Blue	Blue	Blue	Blue	Blue	Blue	Blue	Blue	Blue	Blue	Blue
	81	MEDIUM	Blue	Blue	Blue	Blue	Blue	Blue	Blue	Blue	Blue	Blue	Blue	Blue	Blue	Blue	Blue
	91	HARD	Blue	Blue	Blue	Blue	Blue	Blue	Blue	Blue	Blue	Blue	Blue	Blue	Blue	Blue	Blue
MICHELIN LATITUDE CROSS PZ	70	SOFT	Blue	Blue	Blue	Blue	Blue	Blue	Blue	Blue	Blue	Blue	Blue	Blue	Blue	Blue	Blue
	80	MEDIUM	Blue	Blue	Blue	Blue	Blue	Blue	Blue	Blue	Blue	Blue	Blue	Blue	Blue	Blue	Blue



MICHELIN LATITUDE CROSS



THE ROBUST TYRE FOR ABRASIVE SURFACES



ROBUSTNESS

Thanks to its reinforced casing, the MICHELIN Latitude Cross offers excellent impact-resistance, which allows it to drive on rocky and abrasive surfaces.



STABILITY

The direction of the rubber blocks provides grip and stability on abrasive surface.



GRIP

Thanks to optimized groove and ridge rates for driving on difficult surface, the MICHELIN Latitude Cross delivers substantial grip in the accelerating and braking phases.

DIAMETRE	SIZE	TL	RANGE	COMPOUND
15"	17/65 - 15	TL	LATITUDE CROSS	S70 L
	17/65 - 15	TL	LATITUDE CROSS	S70 R
	17/65 - 15	TL	LATITUDE CROSS	M80 L
	17/65 - 15	TL	LATITUDE CROSS	M80 R
	17/65 - 15	TL	LATITUDE CROSS	M85 L
	17/65 - 15	TL	LATITUDE CROSS	M85 R
	17/65 - 15	TL	LATITUDE CROSS	H90 L
	17/65 - 15	TL	LATITUDE CROSS	H90 R

L : Left
R : Right

Available in 15"

Abrasive surface



Cf. p33

	COMPOUND	SURFACE			CONDITION			TEMPERATURE (°C)									
		GRAVEL	COMPACT	ABRASIVE	MUD	MIXED	DRY	-5	0	5	10	15	20	25	30	35+	
S70	SOFT	Yellow	Yellow	Yellow	Yellow	Yellow	Yellow	Yellow	Yellow	Yellow	Yellow	Yellow	Yellow	Yellow	Yellow	Yellow	Yellow
M80	MEDIUM	Yellow	Yellow	Yellow	Yellow	Yellow	Yellow	Yellow	Yellow	Yellow	Yellow	Yellow	Yellow	Yellow	Yellow	Yellow	Yellow
M85	MEDIUM / HARD	Yellow	Yellow	Yellow	Yellow	Yellow	Yellow	Yellow	Yellow	Yellow	Yellow	Yellow	Yellow	Yellow	Yellow	Yellow	Yellow
H90	HARD	Yellow	Yellow	Yellow	Yellow	Yellow	Yellow	Yellow	Yellow	Yellow	Yellow	Yellow	Yellow	Yellow	Yellow	Yellow	Yellow

MICHELIN LTX FORCE T

GRAVEL RALLY



THE LATEST MICHELIN GENERATION GRIP ON ROLLING SURFACES

Grip **GRIP**

The zig-zag sipes provide drive in the braking and acceleration phases, avoiding the tire deforming under the effort and thus guaranteeing maximum grip.



PRECISE AND IMMEDIATE FEEDBACK

Thanks to the interlocked L-block tread, the tyre offers good alignment and driving precision.



RESISTANT TO IMPACT

Designed without stiffeners, the LTX FORCE T remains light while being resistant to impact during rolling gravel rallies. Its tread, comprising solid blocks and wide wells, provides strength without storing heat.

Available in 14" and 15"

Rolling surface



DIAMETRE	SIZE	TL	RANGE	COMPOUND
14"	14/60 - 14	TL	LTX FORCE T	81
	14/60 - 14	TL	LTX FORCE T	91
15"	14/62 - 15	TL	LTX FORCE T	71
	14/62 - 15	TL	LTX FORCE T	81
	16/64 - 15	TL	LTX FORCE T	71
	16/64 - 15	TL	LTX FORCE T	81
	17/65 - 15	TL	LTX FORCE T	71
	17/65 - 15	TL	LTX FORCE T	81
15"	17/65 - 15	TL	LTX FORCE T	91
	17/65 - 15	TL	LTX FORCE T	81
	18/66 - 15	TL	LTX FORCE T	71

	COMPOUND	SURFACE			CONDITION			TEMPERATURE (°C)									
		GRAVEL	COMPACT	ABRASIVE	MUD	MIXED	DRY	-5	0	5	10	15	20	25	30	35+	
71	SOFT	Yellow	Yellow	Grey	Yellow	Yellow	Yellow	Yellow	Yellow	Yellow	Yellow	Yellow	Yellow	Yellow	Grey	Grey	Grey
81	MEDIUM	Yellow	Yellow	Grey	Yellow	Yellow	Yellow	Yellow	Yellow	Yellow	Yellow	Yellow	Yellow	Yellow	Yellow	Grey	Grey
91	HARD	Yellow	Yellow	Grey	Grey	Grey	Yellow	Grey	Grey	Grey	Grey	Grey	Grey	Grey	Yellow	Yellow	Yellow

MICHELIN LATITUDE CROSS PZ



GRIP ON ROLLING SURFACES

Grip *GRIP*

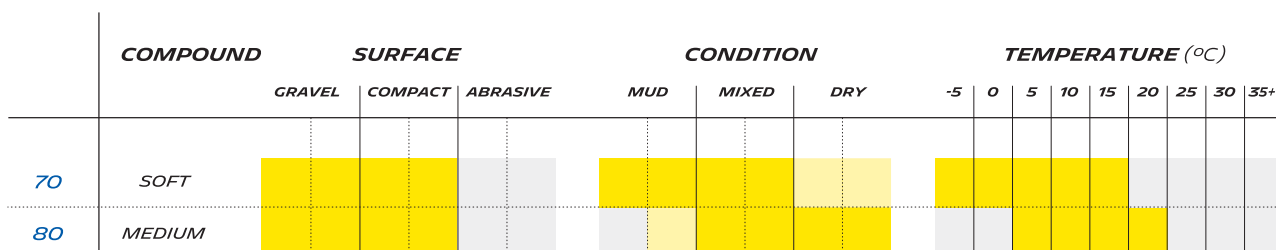
Designed to provide a good balance between drive and grip when braking on rolling tracks and on gravel rallies in Nordic countries, for maximum grip.

DIAMETRE	SIZE	TL	RANGE	COMPOUND
15"	17/65 - 15	TL	LATITUDE CROSS PZ	70 L
	17/65 - 15	TL	LATITUDE CROSS PZ	70 R
	17/65 - 15	TL	LATITUDE CROSS PZ	80 L
	17/65 - 15	TL	LATITUDE CROSS PZ	80 R

L : Left
R : Right

Available in 15"

Abrasive surface





RECUTTING



Recutting modifies the tyre characteristics and performances. This operation requires suitable equipment and tools and compliance with the instructions.

Before starting to recut the desired tyre, we recommend you carry out a few tests on a used tire in order to correctly assess the depth and width of the grooves. This will prevent damaging the casing plies located under the rubber.



Recutting a tyre that has already been used (not new), is prohibited. Recutting or regrooving ECE R30 homologated tyres, thus intended for use on public roads, is prohibited.



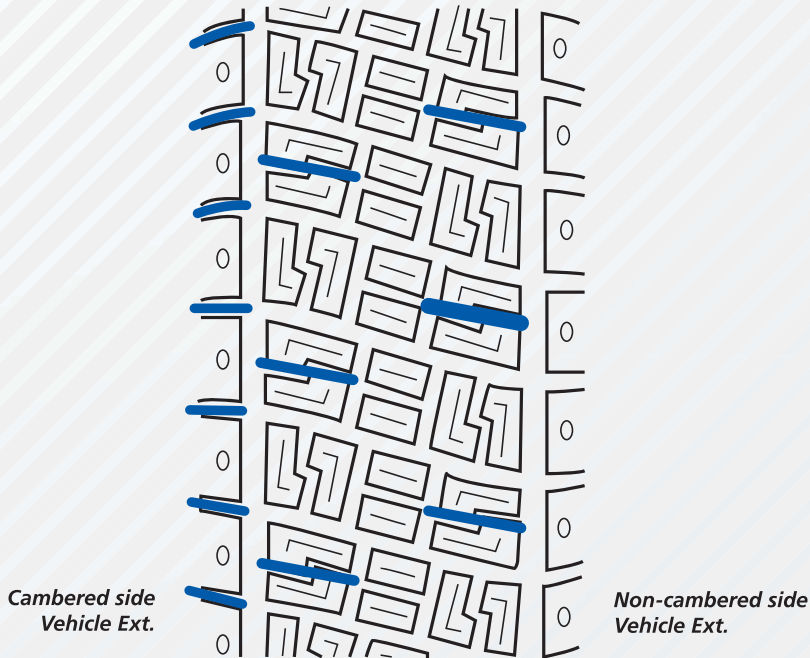
Contact **Michelin** services prior to any recutting operation: **00 33 (0) 4 73 30 14 55**.

RECUTTING PLAN FOR A GRAVEL TYRE

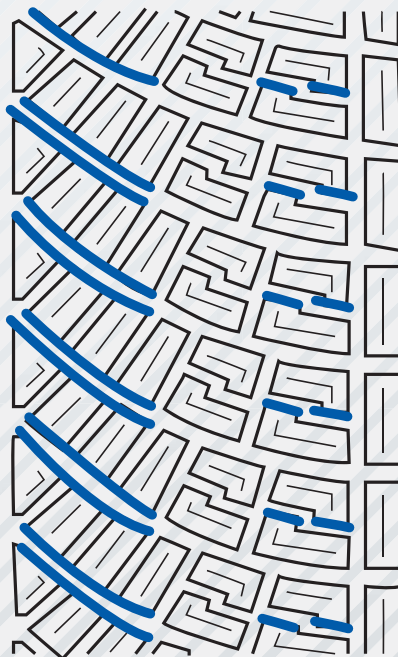
GRAVEL RALLY

We have two gravel tyre ranges with two different treads:

MICHELIN LTX FORCE T TREAD



MICHELIN LATITUDE CROSS TZS / TZ / PZ TREAD



ICE RALLY

***MICHELIN
XICE NORTH
DESIGNED FOR
ICE RALLIES
IN NORDIC
COUNTRIES!***



MICHELIN XICE NORTH NA01

ICE RALLY

**EXTREME GRIP FOR ICE RALLIES****GRIP ON ICY SURFACES**

Thanks to a studded, tear-resistant profile and a tread designed to drive on ice, the tyre guarantees maximum grip in straight lines and when cornering.

**STABILITY WHEN CORNERING**

The casing has been designed to offer excellent lateral support on snowy and icy surfaces.

DIAMETRE	SIZE	TL	RANGE	COMPOUND
15"	13/64 - 15	TL	X-ICE NORTH	NA01
	15/65 - 15	TL	X-ICE NORTH	NA01 L
	15/65 - 15	TL	X-ICE NORTH	NA01 R

L = Left
R = Right



15/65-15



13/64-15

Available in 15"

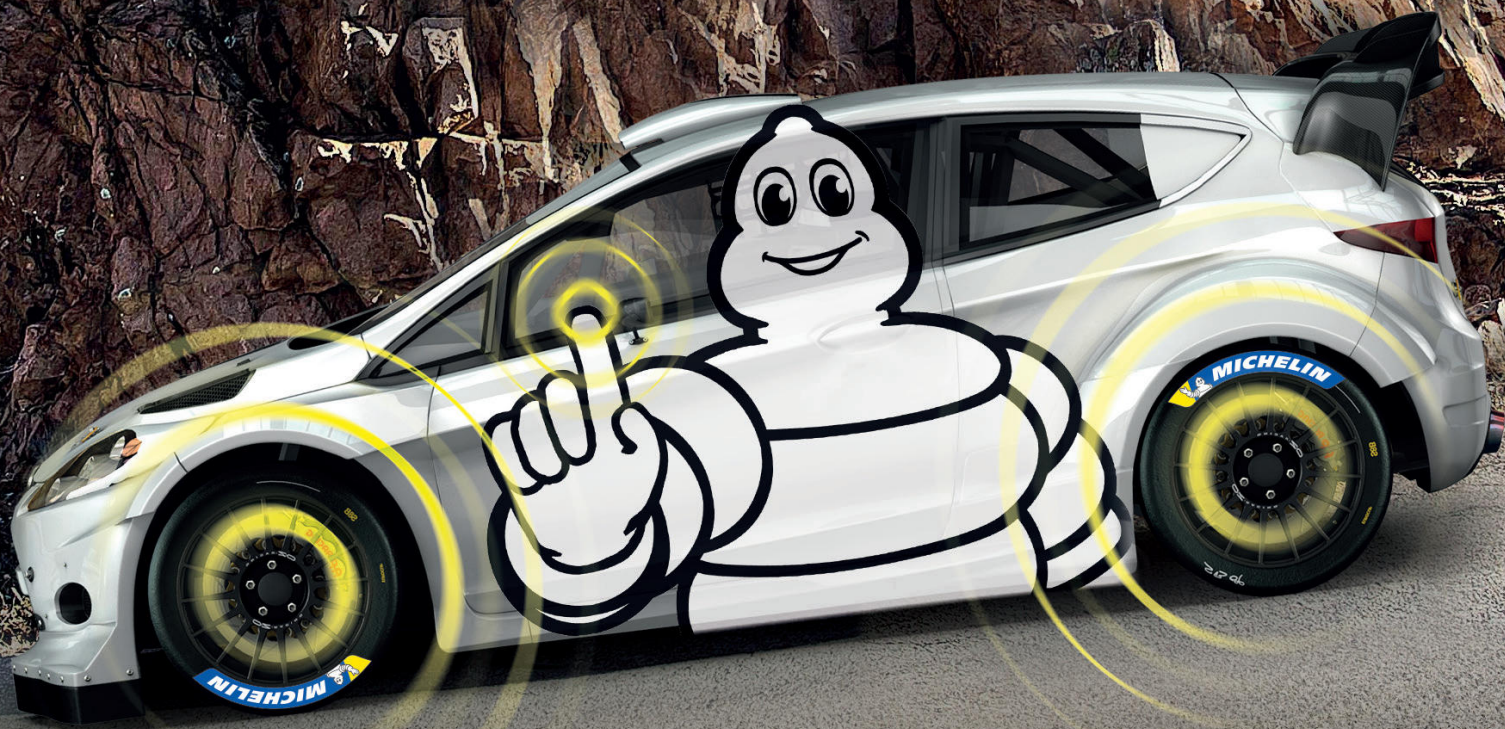
Studded type Suède



UPGRADE YOUR RACE PERFORMANCE!

MICHELIN Track Connect is an app made to upgrade your driving performance on circuit.

The **Motorsport mode** is specifically made for racing use, rally and circuit coming soon. It provides real time data allowing you to use your MICHELIN racing tyres to their full potential.



MICHELIN TRACK CONNECT

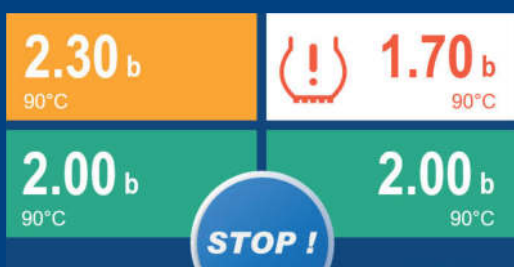
MOTORSPORT MODE

BENEFICES DE L'APP MICHELIN TRACK CONNECT MODE MOTORSPORT :

- Optimize the race performance by starting with the pressures recommended by the app. This pressure is specific to the vehicle, the use, compound fitted and the driving conditions.
- Improve lap time and handling during races by consulting the real time pressures on the smartphone.
- Use the full potential of the tyres by analysing the data recorded during a run and adapting pressures for the next.



Receive data directly on the smartphone thanks to the sensor installed in the MICHELIN racing tyres.



PUNCTURE WARNING

Drive more safely during the races and be warned directly on the smartphone of a slow puncture thanks to an alert.

TECHNICAL DATA

ASPHALT & SNOW RALLY

DIAMETRE	SIZE	TL	RANGE	COMPOUND	PROFIL	WHEEL RECOMMENDED (")	TREAD WIDTH (MM)	TIRE SECTION (MM)	DIAMETER INFLATED (MM)	ROLLING CIRCUMFERENCE (MM)
14	16/57 - 14	TL	PILOT SPORT R	P01	Rain	6	152	180	569	1741
	16/57 - 14	TL	PILOT SPORT R	11	Soft	6	152	180	569	1741
	16/57 - 14	TL	PILOT SPORT R	21	Medium	6	152	180	569	1741
	16/61 - 15	TL	PILOT ALPIN	NA01 CL	Studded snow	6,5	160	202	610	1926
	16/61 - 15	TL	PILOT ALPIN	NA01	Snow	6,5	160	202	610	1926
15	19/58 - 15	TL	PILOT SPORT R	P01	Rain	6,5	177	194	581	1825
	19/58 - 15	TL	PILOT SPORT R	11	Soft	6,5	177	194	581	1825
	19/58 - 15	TL	PILOT SPORT R	21	Medium	6,5	177	194	581	1825
	19/58 - 15	TL	PILOT SPORT R	31	Hard	6,5	177	194	581	1825
	20/58 - 15	TL	PILOT SPORT R	P01	Rain	7	193	210	576	1811
	20/58 - 15	TL	PILOT SPORT R	11	Soft	7	193	210	576	1811
	20/58 - 15	TL	PILOT SPORT R	21	Medium	7	193	210	576	1811
	16/61 - 16	TL	PILOT ALPIN	NA01 CL	Studded snow	6,5	160	197	615	1934
	16/61 - 16	TL	PILOT ALPIN	NA01	Snow	6,5	160	197	615	1934
16	19/60 - 16	TL	PILOT SPORT A	MW1	Rain	6,5	182	197	600	1887
	19/60 - 16	TL	PILOT SPORT R	P01	Rain	6,5	180	198	602	1851
	19/60 - 16	TL	PILOT SPORT R	11	Soft	6,5	180	198	602	1851
	19/60 - 16	TL	PILOT SPORT R	21	Medium	6,5	180	198	602	1851
	19/60 - 16	TL	PILOT SPORT R	31	Hard	6,5	180	198	602	1851
	16/61 - 17	TL	PILOT ALPIN	NA01 CL	Studded snow	7	159	197	610	1937
	16/61 - 17	TL	PILOT ALPIN	NA01	Snow	7	159	197	610	1937
17	19/63 - 17	TL	PILOT SPORT A	MW1	Rain	7	182	202	629	1976
	19/63 - 17	TL	PILOT SPORT R	P01	Rain	7	180	199	631	1942
	19/63 - 17	TL	PILOT SPORT R	11	Soft	7	180	199	631	1942
	19/63 - 17	TL	PILOT SPORT R	21	Medium	7	180	199	631	1942
	19/63 - 17	TL	PILOT SPORT R	31	Hard	7	180	199	631	1942
	20/63 - 17	TL	PILOT SPORT R	11	Soft	8	200	222	626	1967
	20/63 - 17	TL	PILOT SPORT R	21	Medium	8	200	222	646	1980
	18/65 - 18	TL	PILOT SPORT	FW 3 L	Rain	8	173	219	649	2041
	18/65 - 18	TL	PILOT SPORT	FW 3 R	Rain	8	173	219	649	2041
18	18/65 - 18	TL	PILOT ALPIN	NA01 CL	Studded snow	8	175	221	650	2042
	18/65 - 18	TL	PILOT ALPIN	NA01	Snow	8	175	221	650	2042
	20/65 - 18	TL	PILOT SPORT A	MW1	Rain	8	220	226	646	1980
	20/65 - 18	TL	PILOT SPORT A	SS01	Super Soft	8	202	225	649	2038
	20/65 - 18	TL	PILOT SPORT A	S10	Soft	8	202	225	649	2038
	20/65 - 18	TL	PILOT SPORT A	M20	Medium	8	202	225	649	2038
	20/65 - 18	TL	PILOT SPORT A	H30	Hard	8	202	225	649	2038
	20/65 - 18	TL	PILOT SPORT R	P01	Rain	8	202	225	648	1993
	20/65 - 18	TL	PILOT SPORT R	01	Super Soft	8	202	225	648	1993
	20/65 - 18	TL	PILOT SPORT R	11	Soft	8	202	225	648	1993
	20/65 - 18	TL	PILOT SPORT R	21	Medium	8	202	225	648	1993
	20/65 - 18	TL	PILOT SPORT R	32	Hard	8	202	225	648	1993
	20/65 - 18	TL	PILOT SPORT R	33	Hard	8	202	225	648	1993
	24/65 - 18	TL	PILOT SPORT R	P01	Rain	9	229	245	650	2048
	24/65 - 18	TL	PILOT SPORT R	11	Soft	9	226	249	649	2038
24/65 - 18	TL	PILOT SPORT R	21	Medium	9	229	251	648	2038	
29/65 - 18	TL	PILOT SPORT R	P01	Rain	12	321	315	650	2048	
29/65 - 18	TL	PILOT SPORT R	21	Medium	12	321	321	652	2047	
29/65 - 18	TL	PILOT SPORT R	31	Hard	12	321	321	652	2047	

GRAVEL RALLY

DIAMETRE	SIZE	TL	RANGE	COMPOUND	PROFIL	WHEEL RECOMMENDED (")	TREAD WIDTH (MM)	TIRE SECTION (MM)	DIAMETER INFLATED (MM)	ROLLING CIRCUMFERENCE (MM)
14	14/60 - 14	TL	LTX FORCE T	81	Medium	6	146	182	633	1899
	14/60 - 14	TL	LTX FORCE T	91	Hard	6	146	182	633	1899
	14/62 - 15	TL	LTX FORCE T	71	Soft	6	145	184	624	1871
	14/62 - 15	TL	LTX FORCE T	81	Medium	6	145	184	624	1871
	16/64 - 15	TL	LTX FORCE T	71	Soft	6	164	205	644	1934
	16/64 - 15	TL	LTX FORCE T	81	Medium	6	164	205	644	1934
	16/64 - 15	TL	LTX FORCE T	91	Hard	6	164	205	644	1934
	17/65 - 15	TL	LTX FORCE T	71	Soft	6	186	197	643	2019
	17/65 - 15	TL	LTX FORCE T	81	Medium	6	186	197	643	2019
	17/65 - 15	TL	LTX FORCE T	91	Hard	6	186	197	643	2019
15	17/65 - 15	TL	LATITUDE CROSS	S70 L	Soft	7	180	213	647	1947
	17/65 - 15	TL	LATITUDE CROSS	S70 R	Soft	7	180	213	647	1947
	17/65 - 15	TL	LATITUDE CROSS	M80 L	Medium	7	180	222	646	1945
	17/65 - 15	TL	LATITUDE CROSS	M80 R	Medium	7	180	222	646	1945
	17/65 - 15	TL	LATITUDE CROSS	M85 L	Medium/Hard	7	180	219	648	2036
	17/65 - 15	TL	LATITUDE CROSS	M85 L	Medium/Hard	7	180	219	648	2036
	17/65 - 15	TL	LATITUDE CROSS	H90 L	Hard	7	180	219	648	2036
	17/65 - 15	TL	LATITUDE CROSS	H90 R	Hard	7	180	219	648	2036
	17/65 - 15	TL	LATITUDE CROSS PZ	70 L	Soft	7	180	213	647	1947
	17/65 - 15	TL	LATITUDE CROSS PZ	70 R	Soft	7	180	213	647	1947
	17/65 - 15	TL	LATITUDE CROSS PZ	80 L	Medium	7	180	213	647	1947
	17/65 - 15	TL	LATITUDE CROSS PZ	80 R	Medium	7	180	213	647	1947
	18/66 - 15	TL	LTX FORCE T	71	Soft	7	190	233	664	1994

ICE RALLY

DIAMETRE	SIZE	TL	RANGE	COMPOUND	PROFIL	WHEEL RECOMMENDED (")	TREAD WIDTH (MM)	TIRE SECTION (MM)	DIAMETER INFLATED (MM)	ROLLING CIRCUMFERENCE (MM)
15	13/64 - 15	TL	X ICE NORTH	NA01	Studded	6	133	181	640	2011
	15/65 - 15	TL	X ICE NORTH	NA01 L	Studded	7	150	204	650	1954
	15/65 - 15	TL	X ICE NORTH	NA01 R	Studded	7	150	204	650	1954

RECOMMENDATIONS

Update : 1st September, 2020

Data for information purposes only, which may vary according to the actual conditions of use. In the event of use outside normal conditions of use, these recommendations must be adapted. Consult a professional.

Michelin Competition tyres are intended for competition use on closed roads and not for road use outside of competitions.

- **Exceeding certain recommendations (e.g. Camber or low pressure) may cause deterioration to the tyre or a drop in performance: quicker tyre wear, impact on vehicle balance (under- or oversteer).**
- **The integrity of the rally tyre construction is guaranteed for the wear or grip potential.**
- **These recommendations extend beyond driving hazards such as punctures.**



Contact the Michelin Rally technical services for any use outside the defined recommendations.

> Tel. 00 33 (0) 4 73 30 14 55.

ASPHALT RALLY

16/57 - 14

16/57 - 14 R11 - R21 / SA30 / P01

Usage	Rally Asphalt
Charge max / Max Load (static + dynamic)	310 DaN
Vitesse max / Max speed	190 Km/h
Jante nominale / Nominal Rim	6 (+/- 0,5) J 14
Pression minimum à froid / Mini cold pressure	1.6 Bar
Relais / Stints	NA Km

Nb de relais / Nb stints	Pression minimum à chaud / Mini hot pressure
Carrossage / Camber	Mini 2.0 à max 2.3 Bar
Max pince -30, carrossage max 2°	1

18/65 - 15

18/65 - 15 FW2R Full wet

Usage	Rally Asphalt
Charge max / Max Load (static + dynamic)	380 DaN
Vitesse max / Max speed	210 Km/h
Jante nominale / Nominal Rim	8.0 (+/- 0,5) J 18
Pression minimum à froid / Mini cold pressure	2.2 Bar
Relais / Stints	NA Km

19/58 - 15

19/58 - 15 P01 / R11 - R21 R - R31

Usage	Rally Asphalt
Charge max / Max Load (static + dynamic)	400 DaN
Vitesse max / Max speed	190 Km/h
Jante nominale / Nominal Rim	6.5 (+/- 0,5) J 15
Pression minimum à froid / Mini cold pressure	1.6 Bar
Relais / Stints	NA Km

Nb de relais / Nb stints	Pression minimum à chaud / Mini hot pressure
Carrossage / Camber	Mini 2.0 à max 2.3 Bar
Max pince -30, carrossage max 2°	1

20/58 - 15

20/58 - 15 R11 R - R21 R - P01 R

Usage	Rally Asphalt
Charge max / Max Load (static + dynamic)	NA DaN
Vitesse max / Max speed	NA Km/h
Jante nominale / Nominal Rim	7.0 (+/- 0,5) J 15
Pression minimum à froid / Mini cold pressure	NA Bar
Relais / Stints	NA Km

Nb de relais / Nb stints	Pression minimum à chaud / Mini hot pressure
Carrossage / Camber	Mini 2.0 à max 2.3 Bar
Max pince -30, carrossage max 2°	1

19/60 - 16

19/60 - 16 P01 / R11 - R21 R - R31

Usage	Rally Asphalt
Charge max / Max Load (static + dynamic)	420 DaN
Vitesse max / Max speed	190 Km/h
Jante nominale / Nominal Rim	6.5 (+/- 0,5) J 16
Pression minimum à froid / Mini cold pressure	1.6 Bar
Relais / Stints	NA Km

Nb de relais / Nb stints	Pression minimum à chaud / Mini hot pressure
Carrossage / Camber	Mini 2.0 à max 2.3 Bar
Max pince -30, carrossage max 2°	1

19/63 - 17

19/63 - 17 P01 / R11 R - R21 R - R31

Usage	Rally Asphalt
Charge max / Max Load (static + dynamic)	430 DaN
Vitesse max / Max speed	190 Km/h
Jante nominale / Nominal Rim	7.0 (+/- 0,5) J 17
Pression minimum à froid / Mini cold pressure	1.6 Bar
Relais / Stints	NA Km

Nb de relais / Nb stints	Pression minimum à chaud / Mini hot pressure
Carrossage / Camber	Mini 2.0 à max 2.3 Bar
Max pince -30, carrossage max 2°	1

20/63 - 17

20/63 - 17 R11 R - R21 R

Usage	Rally Asphalt
Charge max / Max Load (static + dynamic)	430 DaN
Vitesse max / Max speed	190 Km/h
Jante nominale / Nominal Rim	8.0 (+/- 0,5) J 17
Pression minimum à froid / Mini cold pressure	1.6 Bar
Relais / Stints	NA Km

Nb de relais / Nb stints	Pression minimum à chaud / Mini hot pressure
Carrossage / Camber	Mini 2.0 à max 2.3 Bar
Max pince -30, carrossage max 2°	1

20/65 - 18

20/65 - 18 MW1 RFID/ P01 / R01 - R11 - R21 R - R31 - R32 - R33 / SS01 - S10 - M20 - H30

Usage	Rally Asphalt
Charge max / Max Load (static + dynamic)	380 DaN
Vitesse max / Max speed	210 Km/h
Jante nominale / Nominal Rim	8.0 (+/- 0,5) J 18
Pression minimum à froid / Mini cold pressure	1.6 Bar
Relais / Stints	NA Km

Nb de relais / Nb stints	Pression minimum à chaud / Mini hot pressure
Carrossage / Camber	Mini 2.0 à max 2.3 Bar
Max pince -30, carrossage max 2°	1

24/65 - 18

24/65 - 18 R11 R - R21 R / SA02 - SA20

Usage	Rally Asphalt
Charge max / Max Load (static + dynamic)	300 DaN
Vitesse max / Max speed	220 Km/h
Jante nominale / Nominal Rim	9.0 (+/- 0,5) J 18
Pression minimum à froid / Mini cold pressure	Minimum 1.6 - Maximum 1.98 Bar
Relais / Stints	NA Km

Nb de relais / Nb stints	Pression minimum à chaud / Mini hot pressure
Carrossage / Camber	Mini 2.0 à max 2.3 Bar
Max pince -30, carrossage max 2°	1

24/65 - 18

24/65 - 18 PE00 / PE01

Usage	Rally Asphalt
Charge max / Max Load (static + dynamic)	300 DaN
Vitesse max / Max speed	220 Km/h
Jante nominale / Nominal Rim	9.0 (+/- 0,5) J 18
Pression minimum à froid / Mini cold pressure	1.8 Bar
Relais / Stints	NA Km

Nb de relais / Nb stints	Pression minimum à chaud / Mini hot pressure
Carrossage / Camber	Mini 2.1 à max 2.3 Bar
Max pince -30, carrossage max 2°	1

29/65 - 18

29/65 - 18 SA20 – SA32 / R21 R – R31 R

Usage	Rally Asphalt
Charge max / Max Load (static + dynamic)	420 DaN
Vitesse max / Max speed	220 Km/h
Jante nominale / Nominal Rim	12.0 J 18
Pression minimum à froid / Mini cold pressure	Minimum 1.6 - Maximum 1.7 Bar
Relais / Stints	NA Km

Nb de relais / Nb stints	Pression minimum à chaud / Mini hot pressure
Carrossage / Camber	Mini 2.1 à max 2.3 Bar
Max pince -30, carrossage max 2°	1

29/65 - 18 PE00 P01

Usage	Rally Asphalt
Charge max / Max Load (static + dynamic)	420 DaN
Vitesse max / Max speed	220 Km/h
Jante nominale / Nominal Rim	12.0 J 18
Pression minimum à froid / Mini cold pressure	1.8 Bar
Relais / Stints	NA Km

Nb de relais / Nb stints	Pression minimum à chaud / Mini hot pressure
Carrossage / Camber	Mini 2.1 à max 2.3 Bar
Max pince -30, carrossage max 2°	1

SNOW RALLY

16/61 - 15

16/61 - 15 NA00 – NA01

Usage	Rally Snow
Charge max / Max Load (static + dynamic)	NA DaN
Vitesse max / Max speed	NA Km/h
Jante nominale / Nominal Rim	6.0 (+/- 0,5) J 15
Pression minimum à froid / Mini cold pressure	Minimum 1.6 - Maximum 1.9 Bar
Relais / Stints	NA Km

Nb de relais / Nb stints	Pression minimum à chaud / Mini hot pressure
Carrossage / Camber	2.0b - Max 2.2b Bar
NA°	1

16/61 - 16

16/61 - 16 Pilot Alpin NA01/ NA01CL

Usage	Rally Snow
Charge max / Max Load (static + dynamic)	NA DaN
Vitesse max / Max speed	NA Km/h
Jante nominale / Nominal Rim	6.5 (+/-0.5) J16 H2
Pression minimum à froid / Mini cold pressure	Minimum 1.6 - Maximum 1.9 Bar
Relais / Stints	NA Km

Nb de relais / Nb stints	Pression minimum à chaud / Mini hot pressure
Carrossage / Camber	2.0b - Max 2.4b Bar
NA°	1

16/61 - 17

16/61 - 17 NA00 – NA01

Usage	Rally Snow
Charge max / Max Load (static + dynamic)	NA DaN
Vitesse max / Max speed	NA Km/h
Jante nominale / Nominal Rim	7.0 (+/-0.5) J17
Pression minimum à froid / Mini cold pressure	Minimum 1.6 - Maximum 1.9 Bar
Relais / Stints	NA Km

Nb de relais / Nb stints	Pression minimum à chaud / Mini hot pressure
Carrossage / Camber	2.0b - Max 2.2b Bar
NA°	1

18/65 - 18

18/65 - 18 NA00 /Pilot Alpin NA00 RFID – NA01

Usage	Rally Snow
Charge max / Max Load (static + dynamic)	NA DaN
Vitesse max / Max speed	NA Km/h
Jante nominale / Nominal Rim	8.0 (+/-0.5) J18
Pression minimum à froid / Mini cold pressure	Minimum 1.6 - Maximum 1.9 Bar
Relais / Stints	NA Km

Nb de relais / Nb stints	Pression minimum à chaud / Mini hot pressure
Carrossage / Camber	2.0b - Max 2.2b Bar
NA°	1

16/61 - 15

16/61 - 15 NA00 – NA01

Usage	Rally Snow
Charge max / Max Load (static + dynamic)	NA DaN
Vitesse max / Max speed	NA Km/h
Jante nominale / Nominal Rim	6.0 (+/- 0,5) J 15
Pression minimum à froid / Mini cold pressure	Minimum 1.6 - Maximum 1.9 Bar
Relais / Stints	NA Km

Nb de relais / Nb stints	Pression minimum à chaud / Mini hot pressure
Carrossage / Camber	2.0b - Max 2.2b Bar
NA°	1

GRAVEL RALLY

16/64 - 15

16/64 - 15 TZL 70 - 80 - 90 / TZR 70 - 80 - 90 Rally Gravel

Usage	Rally Gravel /Gravel
Charge max / Max Load (static + dynamic)	NA DaN
Vitesse max / Max speed	NA Km/h
Jante nominale / Nominal Rim	6.0 (+/- 0,5) J 15
Pression minimum à froid / Mini cold pressure	1.7 Bar
Relais / Stints	NA Km

Nb de relais / Nb stints	Pression minimum à chaud / Mini hot pressure	
	Usage roulant/Fast 0b Max b Bar	Usage cassant/Hard Max Bar
Carrossage / Camber		
Max pince -30, carrossage 1° à max 2°	1	1

17/65 - 15

17/65 - 15 M 80 L - R / S 70 L - R / TZSL 70 - 80 - 90 / TZSR 70 - 80 - 90 / TZR 80 / TZL 80 Rally Gravel

Usage	Rally Gravel /Gravel
Charge max / Max Load (static + dynamic)	NA DaN
Vitesse max / Max speed	NA Km/h
Jante nominale / Nominal Rim	7.0 (+/- 0,5) J 15
Pression minimum à froid / Mini cold pressure	1.7 Bar
Relais / Stints	NA Km

Nb de relais / Nb stints	Pression minimum à chaud / Mini hot pressure	
	Usage roulant/Fast 2.0b Max 2.3b Bar	Usage cassant/Hard 2.3b Max 2.5 Bar
Carrossage / Camber		
Max pince -30, carrossage 1° à max 2°	1	1

17/65 - 15 PZR 70 - 80 / PZL 70 - 80 Rally Gravel roulant

Usage	Rally Gravel /Gravel
Charge max / Max Load (static + dynamic)	NA DaN
Vitesse max / Max speed	NA Km/h
Jante nominale / Nominal Rim	7.0 (+/- 0,5) J 15
Pression minimum à froid / Mini cold pressure	1.9 Bar
Relais / Stints	NA Km

Nb de relais / Nb stints	Pression minimum à chaud / Mini hot pressure	
	Usage roulant/Fast 2.0b Max 2.3b Bar	Usage cassant/Hard 2.3b Max 2.5 Bar
Carrossage / Camber		
Max pince -30, carrossage 1° à max 2°	1	1

ICE RALLY

9/58 - 13

9/58 - 13 NA00 Rally Ice

Usage	Rally Snow and Ice – Snow and ice rally
Charge max / Max Load (static + dynamic)	NA DaN
Vitesse max / Max speed	NA Km/h
Jante nominale / Nominal Rim	5.0 J 13
Pression minimum à froid / Mini cold pressure	1.7 Bar
Relais / Stints	NA Km

Nb de relais / Nb stints	Pression minimum à chaud / Mini hot pressure
Carrossage / Camber	1.9b - Max 2.0b Bar
NA°	1

9/58 - 14

9/58 - 14 NA00 Rally Ice

Usage	Rally Snow and Ice – Snow and ice rally
Charge max / Max Load (static + dynamic)	NA DaN
Vitesse max / Max speed	NA Km/h
Jante nominale / Nominal Rim	5.0 J 14
Pression minimum à froid / Mini cold pressure	1.7 Bar
Relais / Stints	NA Km

Nb de relais / Nb stints	Pression minimum à chaud / Mini hot pressure
Carrossage / Camber	1.9b - Max 2.0b Bar
NA°	1

10/65 - 15

10/65 - 15 NA00 Rally Ice

Usage	Rally Snow and Ice – Snow and ice rally
Charge max / Max Load (static + dynamic)	NA DaN
Vitesse max / Max speed	NA Km/h
Jante nominale / Nominal Rim	5.0 J 15
Pression minimum à froid / Mini cold pressure	1.7 Bar
Relais / Stints	NA Km

Nb de relais / Nb stints	Pression minimum à chaud / Mini hot pressure
Carrossage / Camber	1.9b - Max 2.0b Bar
NA°	1

10/65 - 16

10/65 - 16 NA00 / GER00 / GEL00 Rally Ice

Usage	Rally Snow and Ice – Snow and ice rally
Charge max / Max Load (static + dynamic)	NA DaN
Vitesse max / Max speed	NA Km/h
Jante nominale / Nominal Rim	5.0 J 16
Pression minimum à froid / Mini cold pressure	Minimum 1.6 - Maximum 2.0 Bar
Relais / Stints	NA Km

Nb de relais / Nb stints	Pression minimum à chaud / Mini hot pressure
Carrossage / Camber	2.0b - Max 2.1b Bar
NA°	1

CLASSIC COMPETITION

	PERFORMANCES			
				
MICHELIN TB5+	★★★★★	★★★★☆	★★★★★	★★★★★
MICHELIN TB15+	★★★★☆	★★★★☆	★★★★★	★★★★★
MICHELIN PB20	★★★★☆	★★★★★	★★★★★	★★★★☆



GRIP SOL SEC



GRIP SOL MOUILLÉ



MISE EN RÉGIME



COMPORTEMENT



ADVICE AND **PRESSURE**

Data for information purposes only, which may vary according to the actual conditions of use. In the event of use outside normal conditions of use, these recommendations must be adapted. Consult a professional.



We differentiate between cold and hot pressure. **COLD PRESSURE** varies in accordance with the air/ground temperature and the length of the special stages. The **HOT PRESSURE** corresponds to the value measured at the end of the special stage.

We recommend a **COLD PRESSURE**, i.e. on departing the "pit", of 1.8 bar.

The aim is to have a **HOT PRESSURE** between

DRY CONDITION	WET CONDITION
2.0 bar to 2.3 bar maximum	2.1 bar to 2.3 bar maximum



It is important to measure the pressure at the end of the special stage in order to know the hot value that corresponds to the operating pressure.

If the operating pressure is:

- below the operating range: no grip felt.
- above the operating range: appearance of vehicle mobility and deterioration of wear features. If the pressure at the end of the special stage is too high, it is recommended this is adjusted and a maximum of 200 grams removed.

In the wet, there should be no hesitation in raising these pressures back up, as the tyre gains no or little in temperature, and what's more, this is more efficient in evacuating water.

The longitudinal lines allow for water evacuation and preventing aquaplaning, while the "unblockers" improve grip in the event of pollution.



BIMPAIR

RIDE
DON'T
STOP



88G CO2 REFILLABLE CARTRIDGE

THE HIGHEST CO2 CAPACITY
ON THE MARKET!



INFLATE FUNCTION



REFILLABLE THROUGH
MICHELIN MOTORSPORT'S DEALERS



EXCHANGE A FULL CARTRIDGE
FOR AN EMPTY ONE



RESULTS

Refill a standard car tyre completely, or
adjust the pressure on all 4 tyres (300g per tyre)

For example:

1.490 bars for 1 205x55x16 tyre
or 0.372 bars for each 1 of 4 tyres



MICHELIN TB5+



Available in 13" and 15"

Road approved

Two compounds:
F = soft - R = Medium



WHEATER



DESIGNED FOR THE CLASSIC CAR RALLIES ON DRY ROADS

Grip IMPORTANT GRIP ON DRY AND ABRASIVE ROADS

New rubber formula⁽¹⁾ providing a quick warm-up and grip on dry and abrasive roads. Available in 2 compounds that will allow for adapting to several condition.

EASE OF HANDLING

New architecture⁽¹⁾ and new rubber formula⁽¹⁾ allowing the tyre to quickly reach the correct operating temperature and thus facilitates steering and confidence.

(1) comparison with MICHELIN TB5

DIAMETRE	SIZE	TL	RANGE	COMPOUND
13 "	16/53 - 13	TL	TB5+	F
	16/53 - 13	TL	TB5+	R
	20/53 - 13	TL	TB5+	F
	20/53 - 13	TL	TB5+	R
	18/60 - 15	TL	TB5+	F
	18/60 - 15	TL	TB5+	R
15 "	23/59 - 15	TL	TB5+	R
	23/62 - 15	TL	TB5+	F
	23/62 - 15	TL	TB5+	R
	26/61 - 15	TL	TB5+	F
	26/61 - 15	TL	TB5+	R
	29/61 - 15	TL	TB5+	R

MICHELIN TB15+



Available in 13" and 15"

Road approved



WHEATER



A MIXED TYRE FOR CLASSIC CAR RALLIES

Grip IMPORTANT GRIP ON WET ROADS

The MICHELIN TB15+ comprises several longitudinal lines allowing it excellent water evacuation.

CONSISTENT PERFORMANCE

Designed using a rubber formula that allows for maintaining consistent performance under changing wet conditions.

DIAMETRE	SIZE	TL	RANGE
13 "	16/53 - 13	TL	TB15+
	20/53 - 13	TL	TB15+
	18/60 - 15	TL	TB15+
15 "	23/62 - 15	TL	TB15+
	26/61 - 15	TL	TB15+

MICHELIN PB20

CLASSIC COMPETITION



WHEATER



THE CLASSIC CAR RALLY MAXI-RAIN SPECIAL



IMPORTANT GRIP ON SOAKING WET ROADS

Thanks to a groove rate greater than that of the MICHELIN TB15+, the MICHELIN PB20 allows for rally driving on roads with a very high water level.

DIAMETRE	SIZE	TL	RANGE
15 "	18/60 - 15	TL	PB20
	23/62 - 15	TL	PB20

Available in 15"

Road approved

TECHNICAL DATA

DIAMETRE	SIZE	TL	RANGE	COMPOUND	EQUIVALENT METRIC DIMENSIONS + LOAD AND SPEED INDEX	EXT. DIAM. (MM)	ROLLING CIRCUMFERENCE (MM)	ETRTO WHEEL WIDTH RECOMMENDED (INCH)	SECTION / RIM (MM/INCH)
13	16/53 - 13	TL	TB5+	F	185/55 R 13 72 V	531	1677	5 à 6,5	188 / 6
	16/53 - 13	TL	TB5+	R	185/55 R 13 72 V	531	1677	5 à 6,5	188 / 6
	16/53 - 13	TL	TB15+	Mixed	175/60 R 13 72 V	542	1704	5 à 6,5	187 / 5
	20/53 - 13	TL	TB5+	F	245/40 R 13 77 V	531	1659	8 à 9,5	248 / 9
	20/53 - 13	TL	TB5+	R	245/40 R 13 77 V	531	1659	8 à 9,5	248 / 9
	20/53 - 13	TL	TB15+	Mixed	225/45 R 13 77 V	538	1689	8 à 9,5	239 / 7,5
15	18/60 - 15	TL	PB20	Rain	205/55 R 15 79 H	609	1869	5,5 à 7,5	220 / 6,5
	18/60 - 15	TL	TB5+	F	225/50 R 15 79 V	605	1912	6 à 8	222 / 7
	18/60 - 15	TL	TB5+	R	225/50 R 15 79 W	605	1912	6 à 8	222 / 7
	18/60 - 15	TL	TB15+	Mixed	215/55 R 15 79 V	619	1945	6 à 8	218 / 7
	23/59 - 15	TL	TB5+	R	265/40 R 15 92 W	592	1817	8,5 à 10	-
	23/62 - 15	TL	PB20	Rain	275/45 R 15 86 H	628	1928	8,5 à 10,5	266 / 9
	23/62 - 15	TL	TB5+	F	270/45 R 15 86 W	620	1903	8,5 à 10,5	271/9
	23/62 - 15	TL	TB5+	R	270/45 R 15 86 W	620	1903	8,5 à 10,5	271/9
	23/62 - 15	TL	TB15+	Mixed	275/45 R 15 86 V	632	1887	8 à 10,5	288 / 10
	26/61 - 15	TL	TB5+	F	285/40 R 15 87 W	610	1920	9,5 à 11	288 / 10
	26/61 - 15	TL	TB5+	R	285/40 R 15 87 W	610	1920	9,5 à 11	266 / 9
	26/61 - 15	TL	TB15+	Mixed	295/40 R 15 87 V	618	1942	9,5 à 11	290 / 10,5
29/61 - 15	TL	TB5+	R	335/35 R 15 93 W	616	1890	11 à 13	-	

F = Soft - R = Medium

